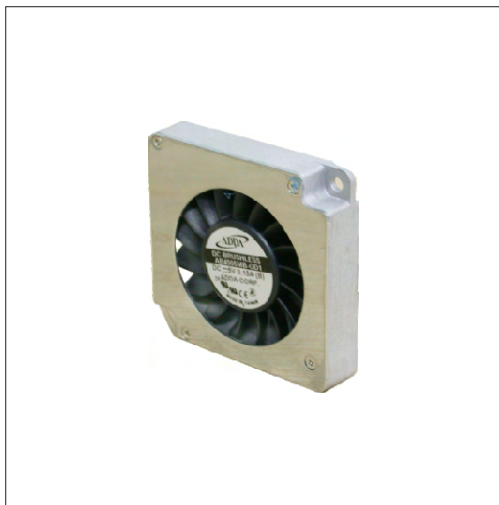
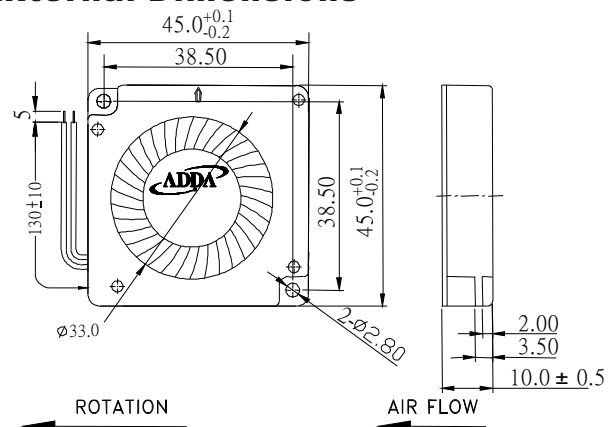


◀45X45X10mm Series▶



Spot cooling,also suitable for small space requirements, laptops PC and notebook,etc.,

External Dimensions



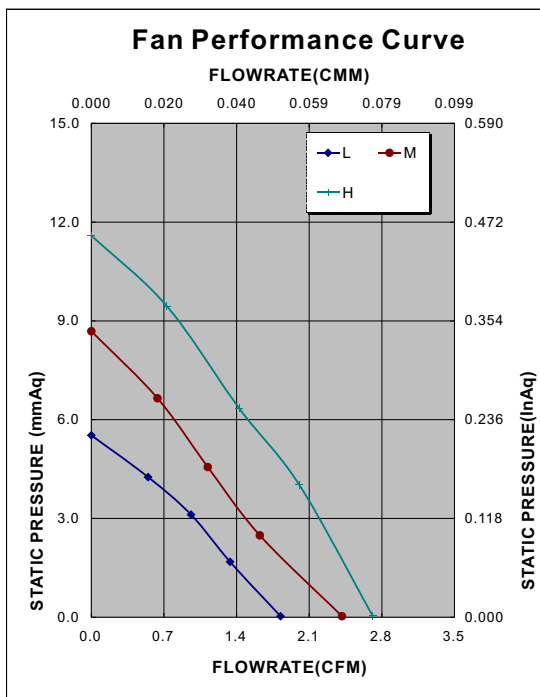
Frame:Plastic(UL:94v-0)
Impeller:Plastic(UL:94v-0)
Bearing:Hypro bearing
Lead wire:UL1571AWG30
OPERATING TEMP*:-10C~70C
VOLTAGE AVAILABLE:5V
*:-10C~60C for fans with sleeve/ball combination bearings.

Specifications(Nominal)

*:Noise is measured at the distance of one(1) meter from the axis of intake.

| Note: The model is selected according to the bearing type and the rated speed of the motor. | | | | | | | | | | | | |
|---|--------------|---------------------|-------------------|-------------------|-----------------|-------------------|--|-----------------------|-------------------------|-------------------------|------------|--------------------|
| Frame size (mm) | Model No. | Bearing System Type | Rated Voltage (v) | Rated Current (A) | Rated Power (W) | Rated Speed (rpm) | Bearing type: =Ball =Sleeve =1B1S =Hypro bearing | | | | Weight (g) | |
| | | | | | | | Maximum AirFlow (CMM) | Maximum AirFlow (CFM) | Maximum Pressure (InAq) | Maximum Pressure (mmAq) | | Noise Level (dB/A) |
| 45X45X10 | AB4505HB-GD1 | | 5 | 0.22 | 1.10 | 5800 | 0.076 | 2.71 | 0.464 | 11.60 | 35.3 | 25 |
| | AB4505MB-GD1 | | 5 | 0.15 | 0.75 | 5000 | 0.068 | 2.42 | 0.348 | 8.69 | 31.1 | |
| | AB4505LB-GD1 | | 5 | 0.06 | 0.30 | 4000 | 0.051 | 1.82 | 0.221 | 5.53 | 24.5 | |
| | AB4505HB-GD2 | | 5 | 0.22 | 1.10 | 5800 | 0.076 | 2.71 | 0.464 | 11.60 | 35.3 | |
| | AB4505MB-GD2 | | 5 | 0.15 | 0.75 | 5000 | 0.068 | 2.42 | 0.348 | 8.69 | 31.1 | |
| | AB4505LB-GD2 | | 5 | 0.13 | 0.65 | 4000 | 0.051 | 1.82 | 0.221 | 5.53 | 24.5 | |
| | AB4505HB-GD3 | | 5 | 0.22 | 1.10 | 5800 | 0.076 | 2.71 | 0.464 | 11.60 | 35.3 | |
| | AB4505MB-GD3 | | 5 | 0.15 | 0.75 | 5000 | 0.068 | 2.42 | 0.348 | 8.69 | 31.1 | |
| | AB4505LB-GD3 | | 5 | 0.06 | 0.30 | 4000 | 0.051 | 1.82 | 0.221 | 5.53 | 24.5 | |
| Specifications subject to change without notice. | | | | | | | | | | | | |

Specifications subject to change without notice.



*Motor protective circuit and third lead wire functions

| 0 | 1 | 2 | 3 | 4 | 6 | 7 | 8 | 9 | A | B |
|---|---|---|---|---|---|---|---|---|---|---|
| | ✓ | ✓ | ✓ | | | | | | | |

*Safety approvals

| UL® | UL® | SP® | SAFETY CERTIFIED | CE | CCC |
|-----|-----|-----|------------------|----|-----|
| ✓ | ✓ | | ✓ | ✓ | |

